

Polar night

for solo flute

Robert Andrew Baker

Derived from
Alert for solo flute and orchestra

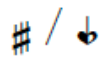
Duration

ca. 5 minutes

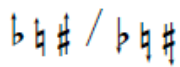
Performance Notes



Quarter tone sharp / flat



Three quarter tone sharp / flat



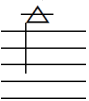
Sixth tone higher / lower



Fermata: ca. 2" / ca. 4" / ca. 8"



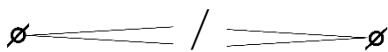
air: breath sound and possibly unstable partials; no notated pitch



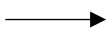
1/2 air: mixture of breath and notated pitch



slap; noise with some notated pitch



Niente crescendo/decrescendo
(*cresc.* From / *decresc.* To nothing)



Change from one mode of playing to another

Polar Night

for solo flute

Robert A. Baker
(2021)

♩ = 60

Solo Flute

air → ord. non vib. vib. ord. non vib. 1/2 air → air ca. 2"

♩ *pp* *p* *pp* *mp* *pp*

Solo Fl.

vib. ord. fi. ord.

♩ *pp* *mf* *p* *mf* *p* *mf* *p* *mp* *p* *mf* *p* *pp* *p*

Solo Fl.

ord. poco rit. ----- a tempo 1/2 air

♩ *p* *mf* *mf* *f* *p* *mp* *mf* *p* *mf*

Solo Fl.

ord.

♩ *p* *f* *p* *mf*

Solo Fl.

poco rit. ----- ca. 4"

♩ *mf* *p* *pp* *mp* *p*

Solo Fl.

♩ *pp* *p* *p* *mf* *mf* *fp*

Solo Fl. non vib.

ff *f* *f* *p* *fp* *f* *f* *p*

Solo Fl. vib. ord.

pp *mf* *mp*

Solo Fl. 1/2 air

p *mp* *mf* *mp* *f*

a little quicker, and somewhat agitated

(ca. ♩ = 76 - 80)

poco accel.

Solo Fl. slap tongue

f *ff* *mf* *f*

slightly quicker

poco rit.

Solo Fl.

ff *mf* *f* *mf* *mf* *fp* *pp* *p*

tempo I (♩ = 60)

Solo Fl. non vib. → 1/2 air → ord.

mf > *pp* < *p* *mf* > *p* *mf* > *p*

Solo Fl. poco accel. --- vib. ord. ord. → *ft.* ord.

pp < *p* < *ff* *fp* < *mp* > *p* < *f* >

a little quicker (ca. ♩ = 76 - 80)

Solo Fl. quasi pizz. > ord.

p < *mf* > *ff* *fp* < *p* < *mf* >

Solo Fl.

mf < *pp* < *p* *mp* > *p* < *mf* > *p* *mf* >

Solo Fl. 1/2 air ft. ord. non vib. vib. ord.

f *pp* < *mp* < *f* < > *fp* < *f*

Solo Fl. ft. quasi pizz. ord.

mfp < *fp* < *mp* < *pp*

Solo Fl. → *ft.* ord.

p < *mf* > *fp* > *f* > *mf* < *ff*

Solo Fl. 66

air → *ord.* *non vib.* *vib. ord.*

mf *p* < *mp* < *f* > *mp* < *f* <

Solo Fl. 71

> *p* < *mf* > *p* < *mf*

Solo Fl. 73

poco accel. ----- **a little quicker**

f < *ff* *f* > < *mf* < *fp* < *f* > *p* < *mf* *mp* < *mf* <

Solo Fl. 76

ft. *ord.* *ft.* *ord.*

< *f* > < *mf* > < *f* > *p* <

Solo Fl. 79

poco rit. ----- *non harm.*

fp < > *pp* < *p* < *mf* < *f* > *pp* < *mf* > *p*

tempo I (♩ = 60)

Solo Fl. 83

→ *1/2 air* → *ord.* ca. 8"

fp < *ff* *fff* < *fff*

* transition voice from singing to screaming, rising irregularly upwards to end as high as possible